

Isolation valve overview

**STEAM & CONDENSATE
MANAGEMENT SOLUTIONS**



First for Steam Solutions

EXPERTISE | SOLUTIONS | SUSTAINABILITY

spirax
sarco

Safe, secure isolation

Isolation is an essential requirement in any fluid system, whether to divert flow, shut down the system, allow access for maintenance or the removal/installation of equipment. When selecting an isolation valve from Spirax Sarco, you can be sure of the highest quality and performance; our valves have been developed with safety, security and sustainability in mind.

Spirax Sarco are focused on helping our customers achieve process efficiency, increased production output, energy savings and compliance to toughening legislation. We are able to do this through our extensive applications and systems knowledge and breadth of solutions.

We know that every plant and process has its own needs, which is why we manufacture isolation valves in a comprehensive range of designs, materials and sizes to suit a wide range of applications and processes. With our expertise in steam systems and other related industrial fluids, we can advise to help you select the best solutions for your requirements.



First for Steam Solutions



Bellows sealed isolation valves

Spirax Sarco BSA valve range

Our bellows sealed isolation valves are engineered to maintain plant safety and save energy by totally eliminating stem seal leaks. Zero emissions are guaranteed which ensures our BSA valves meet the most stringent worldwide emissions legislation.

The BSA_T offers a throttling plug as opposed to the standard flat disc. The throttling plug allows manual regulation to adjust line pressure and flow, making this a flexible and user-friendly isolation solution. It can also be used as a basic control valve or a substitute for 'bypass' lines. The throttling plug version also benefits from having twin ply bellows which will extend the products service life. Those valves fitted with a throttling plug have a locking screw as standard, enabling the user to lock the valve in the throttling position.

Key features and benefits:

- Bellows sealed design eliminates emissions for improved energy efficiency.
- Fully compliant with the European Pressure Equipment Directive 97/23/EC.
- Maintenance free giving long life and low cost of ownership.
- Unaffected by vibration and will operate over a wide range of pressures and temperatures.





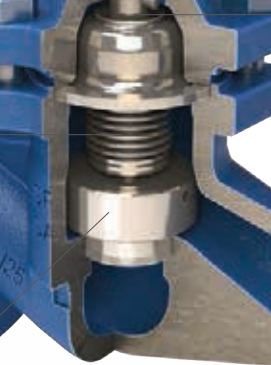
Rugged, non rising handwheel assembly for ease of use



Open / closed position indicator



Bellows anti-torsion device prevents the bellows unit from twisting, extending bellows service life



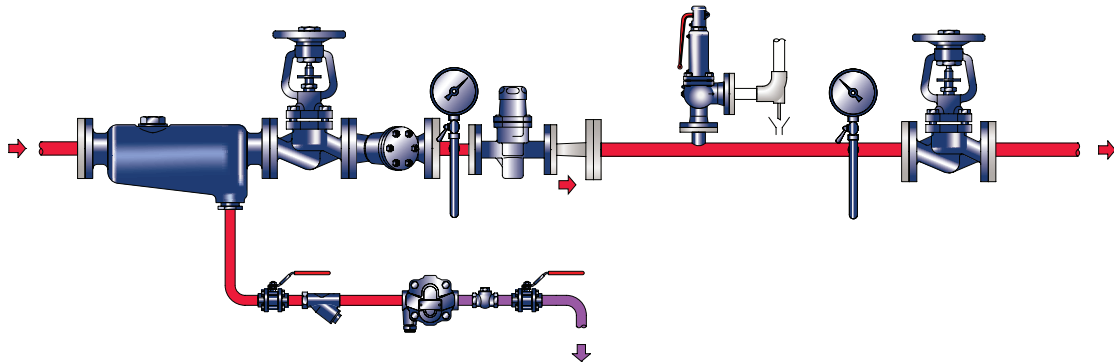
Titanium stabilised austenitic stainless steel bellows for durability



Optional disc assemblies available:
- soft sealing discs
- balancing discs



Typical application for a bellows sealed valve



BSA valves are suitable for use across many industries including oil and petrochemicals, food and beverage, pulp and paper and pharmaceutical.



Double block and bleed bellows sealed isolation valve

Spirax SafeBloc™

The Spirax SafeBloc™ is a double isolation solution, with a unique space-saving design, offering reduced installation time and fewer leak paths.

Faster and easier to install than a traditional double block and bleed assembly, the Spirax SafeBloc™ has an innovative design which incorporates two bellows sealed isolation valves and a bleed port in one compact assembly. Easy to use and commission, the Spirax SafeBloc™ can be installed without pipework modifications, into the space left by an existing single isolation valve.

Developed to meet the increasing demands of health and safety requirements where traditional single isolation of plant is inadequate, the Spirax SafeBloc™ is a cost effective double isolation solution. Protecting users and maintenance personnel across a wide range of applications and industries it meets best practice requirements to comply with the most stringent risk assessments.



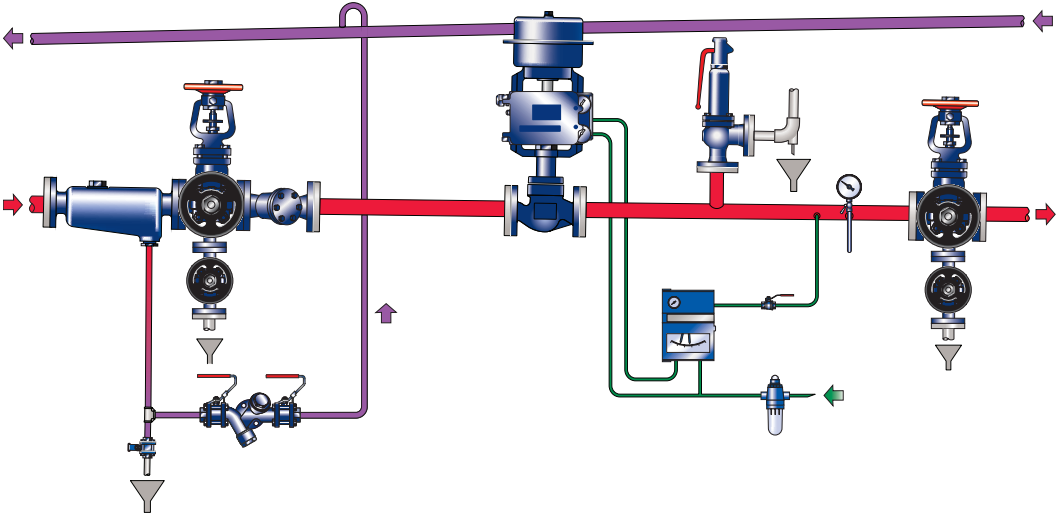
Key features and benefits:

- Double isolation in the space of one valve.
- Quick and easy installation providing lower labour costs and less plant downtime.
- Low pressure drop ensuring excellent performance across a wide range of pressures and applications.
- Zero leakage due to proven bellows sealed technology for reliability and safeguarding personnel.
- Bleed connection facility to safely bleed off downstream pressure.

SafeBloc™ range

Model	Material	Body design rating	Connections	Bleed connection	Size
DBB3	Body and Bonnet - Steel	PN40 or ASME 300	Flanged PN40 or Flanged ASME 300	Flanged DN15 Screwed ½" BSP/NPT Socket weld ½"	DN15 - DN100

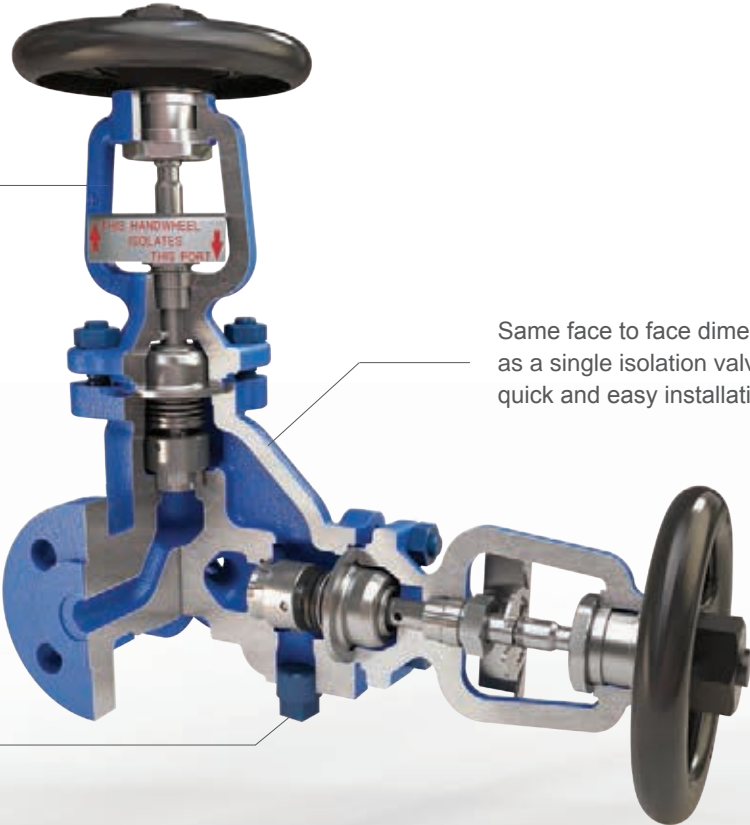
Typical application



All the benefits of a standard Spirax Sarco bellows sealed valve

Same face to face dimension as a single isolation valve for quick and easy installation.

Bleed connection facility



Ball valves

Ball valves are a cost effective, fast-acting isolation solution. Requiring only a quarter turn, operation of the valve is easy and the straightforward flow path reduces pressure drop, making ball valves ideal for steam, condensate, gas and other process media applications.

Spirax Sarco offers a comprehensive range of high performance, low cost ball valves for safe, effective shut-off. We provide a choice of body design, materials, connections, seals and options, plus specialty valves, all segmented for ease of selection to suit your requirements.

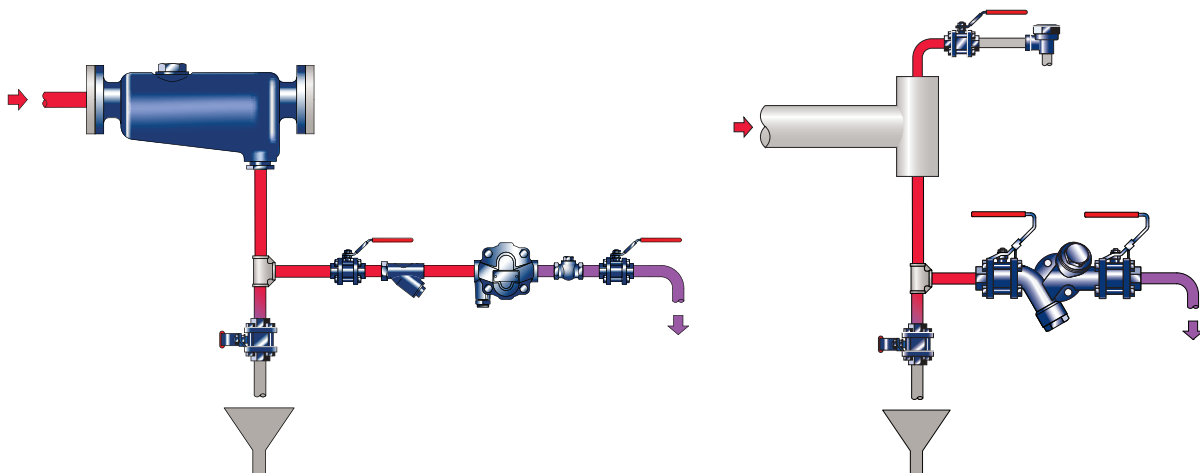
Key features and benefits:

- Manufactured to high specification providing reliable tight shut-off and less maintenance.
- Wide range of sizes, materials and body design option providing a suitable model for most applications.
- Precision design providing compact valves.
- Quarter turn on/off ensuring easy operation and maintenance.
- ISO mounting models which are quick and easy to automate.
- Low torque valves with smaller actuators for automation.
- Unrestricted flow allowing low pressure drop and high capacity.
- Corrosion resistant bodies ensuring long life.





Typical application



Actuated ball valves:

Actuated ball valves operate plant and processes remotely. This can be achieved via local control or network based systems. Spirax Sarco ball valves with ISO mounting are suitable whatever the control system.

Actuation is very easy with our ball valve range as ISO versions are made to simplify the automation process and contain the following advantages:

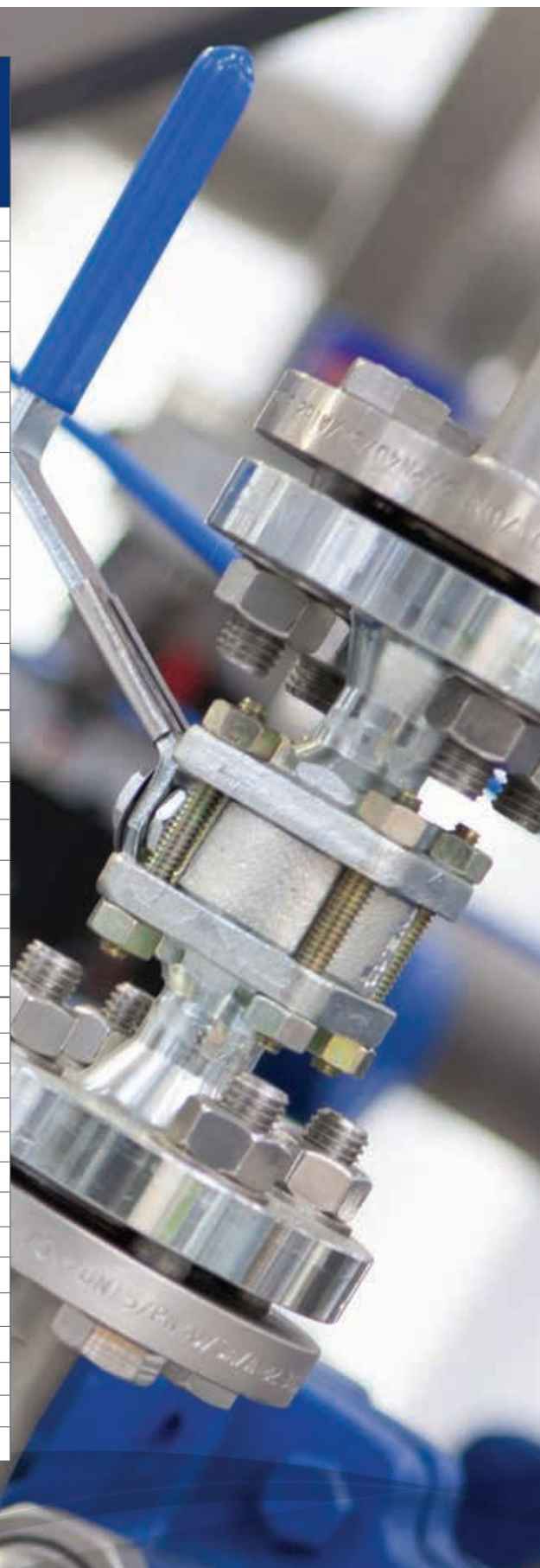
- Designed to ISO 5211 standard.
- Valves can be automated in service.
- Easy maintenance.
- Stainless steel linkage kits.

Isolation valves overview

Ball Valves	Model	Materials			End connections			Sizes	Maximum operating pressure PMO
		Carbon steel	Stainless steel	Full stainless steel	Screwed	Welded	Flanged		
THREE pieces	M10V	•	•	•	•	•	•	¼" - 2½"	10 bar g
	M10S	•	•	•	•	•	•	¼" - 2½"	17.5 bar g
	M10Vi ISO	•	•	•	•	•	•	¼" - 2½"	10 bar g
	M10Si ISO	•	•	•	•	•	•	¼" - 2½"	17.5 bar g
	M10P	•	•	•	•	•	•	¼" - 2½"	17.5 bar g
	M10Pi ISO	•	•	•	•	•	•	¼" - 2½"	17,5 bar g
	M10Ti ISO	•	•	•	•	•	•	¼" - 2½"	-
	M10F	•	•	•	•	•	•	¼" - 2½"	15 bar g
	M10Hi ISO	•	•	•	•	•	•	¼" - 2½"	39 bar g
	M10HTi ISO	•	•	•	•	•	•	¼" - 2½"	17.5 bar g
	M10HP	•	•	•	•	•	•	¼" - 2"	-
	M10HPi ISO	•	•	•	•	•	•	¼" - 2"	-
	M15i ISO	•	•	•	•	•	•	¼" - 2½"	21 bar g
	M70iV ISO			•	Sanitary clamp, Imperial (Tube OD)			½" - 2"	7 bar g
	M70i G ISO			•	Sanitary clamp, Imperial (Tube OD)			½" - 2"	8.5 bar g
	M80iV ISO			•	Sanitary clamp, Imperial (Tube OD)			2½" - 4"	7 bar g
TWO pieces	M31V ISO	•	•				•	2" - 8"	10 bar g
	M31S ISO	•	•				•	2" - 8"	12.5 bar g
	M33V ISO	•	•				•	2" - 8"	10 bar g
	M33S ISO	•	•				•	2" - 8"	17.5 bar g
	M33F ISO	•	•				•	2" - 8"	17.5 bar g
	M33T ISO	•	•				•	2" - 8"	-
	M33 H ISO	•	•				•	2" - 8"	39 bar g
	M33HT ISO	•	•				•	2" - 8"	17.5 bar g
ONE piece	M21Vi ISO	•	•				•	½" - 6"	10 bar g
	M21Si ISO	•	•				•	½" - 6"	17.5 bar g
	M21Si ISO (BB)	•	•				•	1" - 2½"	17.5 bar g
	M21Fi ISO	•	•				•	½" - 6"	17.5 bar g
	M21Ti ISO	•	•				•	½" - 6"	-
	M21Hi ISO	•	•				•	½" - 6"	32 bar g
	M21HTi ISO	•	•				•	½" - 6"	17.5 bar g
	M40Vi ISO	•	•				•	1" - 6"	10 bar g
	M40Si ISO	•	•				•	1" - 6"	17.5 bar g
	M40 Si ISO (BB)	•	•				•	1" - 2½"	17.5 bar g
	M40 Fi ISO	•	•				•	1" - 6"	17.5 bar g
	M40 Ti ISO	•	•				•	1" - 6"	-
	M40 Hi ISO	•	•				•	1" - 6"	39 bar g
	M40 HTi ISO	•	•				•	1" - 6"	17.5 bar g

First for Steam Solutions

Seats	Applications / Industries
Virgin PTFE	Low pressure applications, steam (<10 bar g), condensate, gases
Reinforced PTFE	Medium pressure applications, steam (<17.5 bar g), process fluids
Virgin PTFE	Low pressure applications, steam (<10 bar g), condensate, gases
Reinforced PTFE	Medium pressure applications, steam (<17.5 bar g), process fluids
PDR 0.8	OPC industry (800 class or 2000PSI)
PDR 0.8	OPC industry (800 class or 2000PSI)
UHMWPE	Teflon free process applications - Tobacco industry (Not suitable for steam)
PDR 0.8	FIRESAFE design (API Certified) - OPC industry
PEEK	High pressure applications, steam (<39barg), thermal oils
Virgin PEEK	Teflon free steam applications - Tobacco industry
Acetal	High pressure applications - 300 bar g or 4500PSI (Not suitable for steam)
Acetal	High pressure applications - 350 bar g or 5000PSI (Not suitable for steam)
AISI 316 + ENP	Temperature modulating control applications
Virgin PTFE TFM-1600	Clean steam and condensate
Mineral filled PTFE	Clean steam and condensate
Virgin PTFE TFM-1600	Clean steam and condensate
Virgin PTFE	Low pressure applications, steam (<10 bar g), condensate, gases
PDR 0.8	Medium pressure applications, steam (<12,5 bar g), process fluids
Virgin PTFE	Low pressure applications, steam (<10 bar g), condensate, gases
PDR 0.8	Medium pressure applications, steam (<17,5 bar g), process fluids
PDR 0.8	FIRESAFE design (API Certified) - OPC industry
UHMWPE	Teflon free process applications - Tobacco industry (Not suitable for steam)
PEEK	High pressure applications, steam (<39barg), thermal oils
Virgin PEEK	Teflon free steam applications - Tobacco industry
Virgin PTFE	Low pressure applications, steam (<10 bar g), condensate, gases
PDR 0.8	Medium pressure applications, steam (<17,5 bar g), process fluids
PDR 0.8	Bottom blowdown
PDR 0.8	FIRESAFE design (API Certified) - OPC industry
UHMWPE	Teflon free process applications - Tobacco industry (Not suitable for steam)
PEEK	High pressure applications, steam (<32barg), thermal oils
Virgin PEEK	Teflon free steam applications - Tobacco industry
Virgin PTFE	Low pressure applications, steam (<10 bar g), condensate, gases
PDR 0.8	Medium pressure applications, steam (<17,5 bar g), process fluids
PDR 0.8	Bottom blowdown
PDR 0.8	FIRESAFE design (API Certified) - OPC industry
UHMWPE	Teflon free process applications - Tobacco industry (Not suitable for steam)
PEEK	High pressure applications, steam (<39barg), thermal oils
Virgin PEEK	Teflon free steam applications - Tobacco industry



Piston valves

RP31, RP32 and RP33

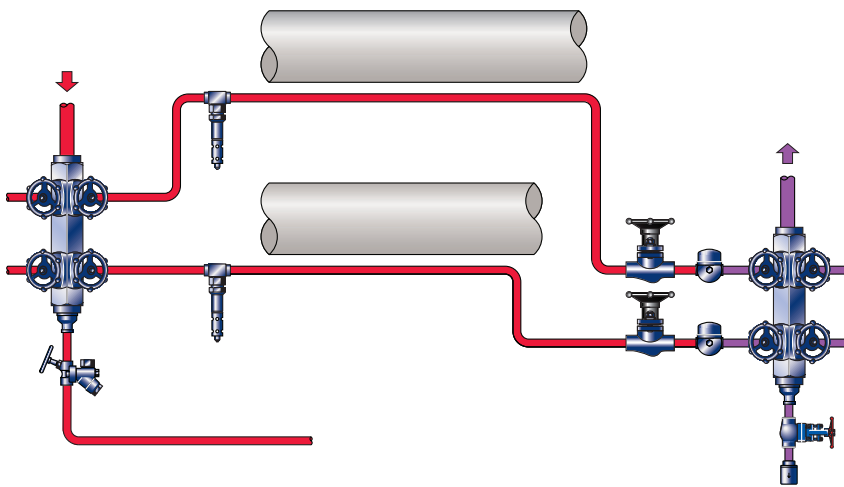
The RP piston valve is a cost effective and easily maintainable solution for the isolation of a range of media across a variety of industries. The 2 sets of sealing rings safeguard the valve against surface erosion for an effective performance without damage and the large sealing area between the piston and rings assures a high level of shut-off tightness for extra security.



Piston valve range

Model	Material	Body design rating	Connections	Size
RP31	Carbon steel	Class 800	Screwed	1/2" - 2"
RP32	Carbon steel	Class 800	Socket weld	1/2" - 2"
RP33	Carbon steel	Class 800	Flanged	DN15 - 50

Typical application



Globe valve

HV3

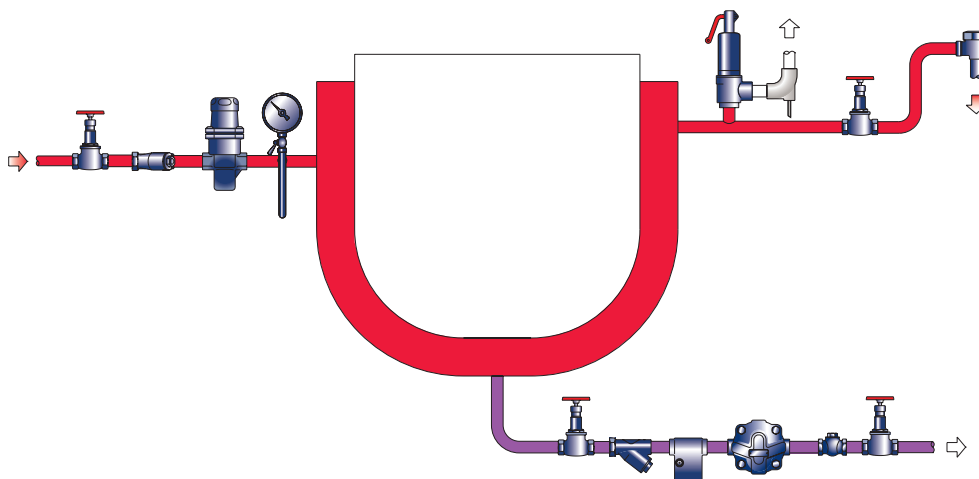
The HV3 globe valve is a cost effective general purpose isolation valve mainly used for isolation of steam trap sets across a wide range of industries, processes, fluids and applications.



Globe valve range

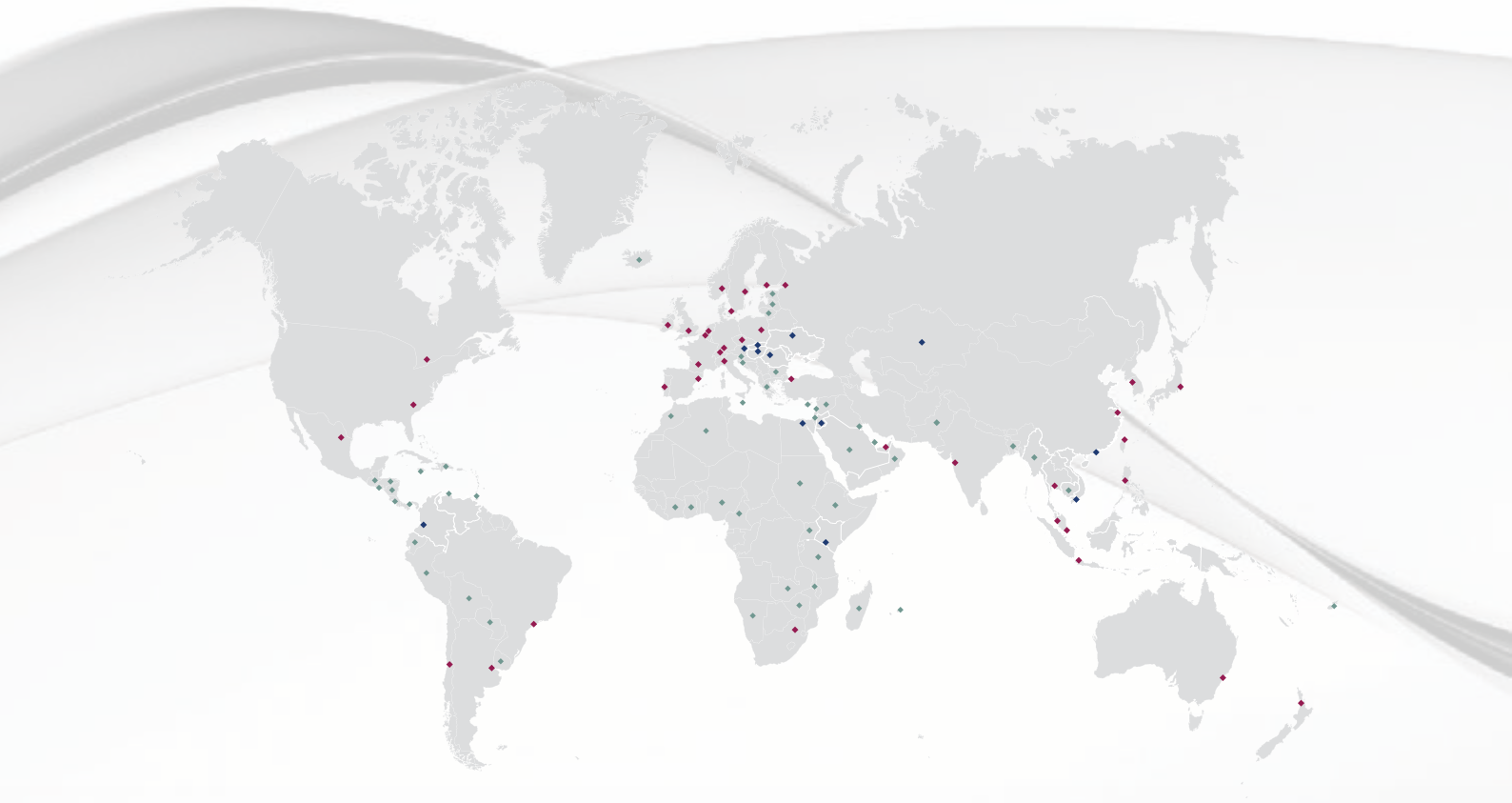
Model	Material	Body design rating	Connections	Size
HV3	Gunmetal	PN25	Screwed BSP	1/2" - 2"

Typical application



The isolation valves featured in this brochure form part of the wide range of products and services available from Spirax Sarco. We offer expert advice and sustainable steam solutions to many industries and applications, and in all areas of the steam and condensate process.

For more information about our isolation valves, or any of our other solutions and services please visit www.spiraxsarco.com.



Operating Companies

EMEA

Belgium	Netherlands
Czech Republic	Poland
Denmark	Portugal
Finland	Russia
* France	South Africa
Germany	Spain
Ireland	Sweden
* Italy	Switzerland
Middle East	Turkey
Norway	*UK

Americas

* Argentina	Chile
* Brazil	Mexico
Canada	*USA

Asia Pacific

Australia	New Zealand
* China	Philippines
India	Singapore
Indonesia	South Korea
Japan	Taiwan
Malaysia	Thailand

* Manufacturing sites

Sales Offices

EMEA

Austria
Egypt
Hungary
Jordan
Kenya
Romania
Slovak Republic
Ukraine

Americas

Columbia

Asia Pacific

Hong Kong
Kazakhstan
Vietnam

Distributors

EMEA

Algeria	Ivory Coast	Oman
Bahrain	Kuwait	Qatar
Bulgaria	Latvia	Saudi Arabia
Cameroon	Lebanon	Slovenia
Croatia	Lithuania	Sudan
Cyprus	Madagascar	Syria
Ethiopia	Malawi	Tanzania
Estonia	Malta	Uganda
Ghana	Mauritius	Zambia
Greece	Morocco	Zimbabwe
Iceland	Namibia	
Israel	Nigeria	

Americas

Bolivia	Honduras	Paraguay
Costa Rica	Jamaica	Peru
Dominican Republic	Netherland Antilles	Trinidad and Tobago
Ecuador	Nicaragua	Uruguay
El Salvador	Pakistan	
Guatemala	Panama	

Asia Pacific

Bangladesh	Fiji
Cambodia	Myanmar



Spirax-Sarco Limited, Charlton House, Cheltenham,
Gloucestershire, GL53 8ER, UK
T +44 (0)1242 521361
F +44 (0)1242 573342
E enquiries@uk.spiraxsarco.com